

Daehakro Arts Theater

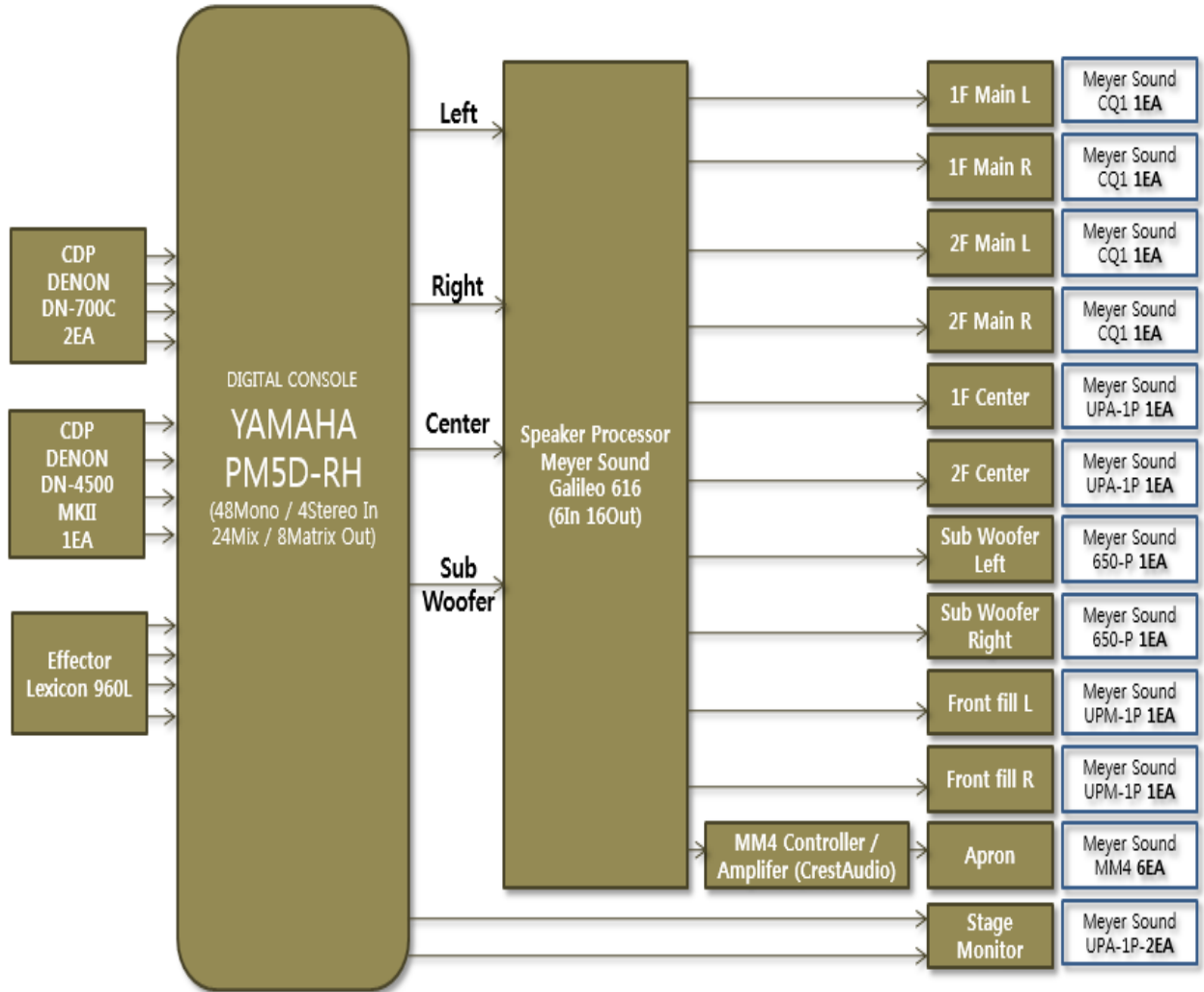
Main Hall

3. Sound

1. Sound System Blockdiagram
2. Sound Equipment
3. Sound Circuit
4. Speakers Position & Direction
5. Control Booth

1. Sound Blockdiagram

Daehakro Main Hall – Sound System Blockdiagram



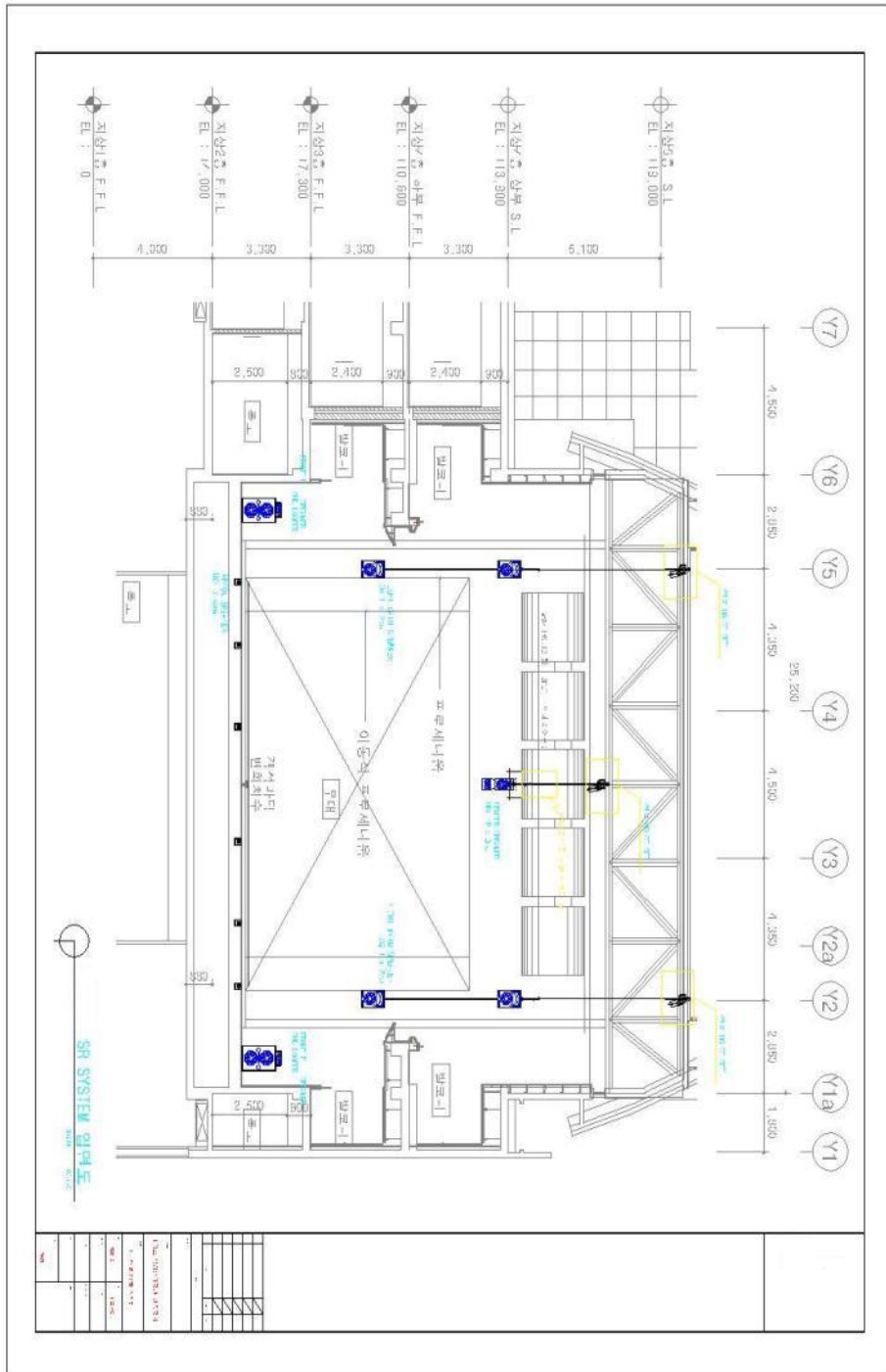
2. Sound Equipment

Sound Equipment List of the Daehakro Main Hall

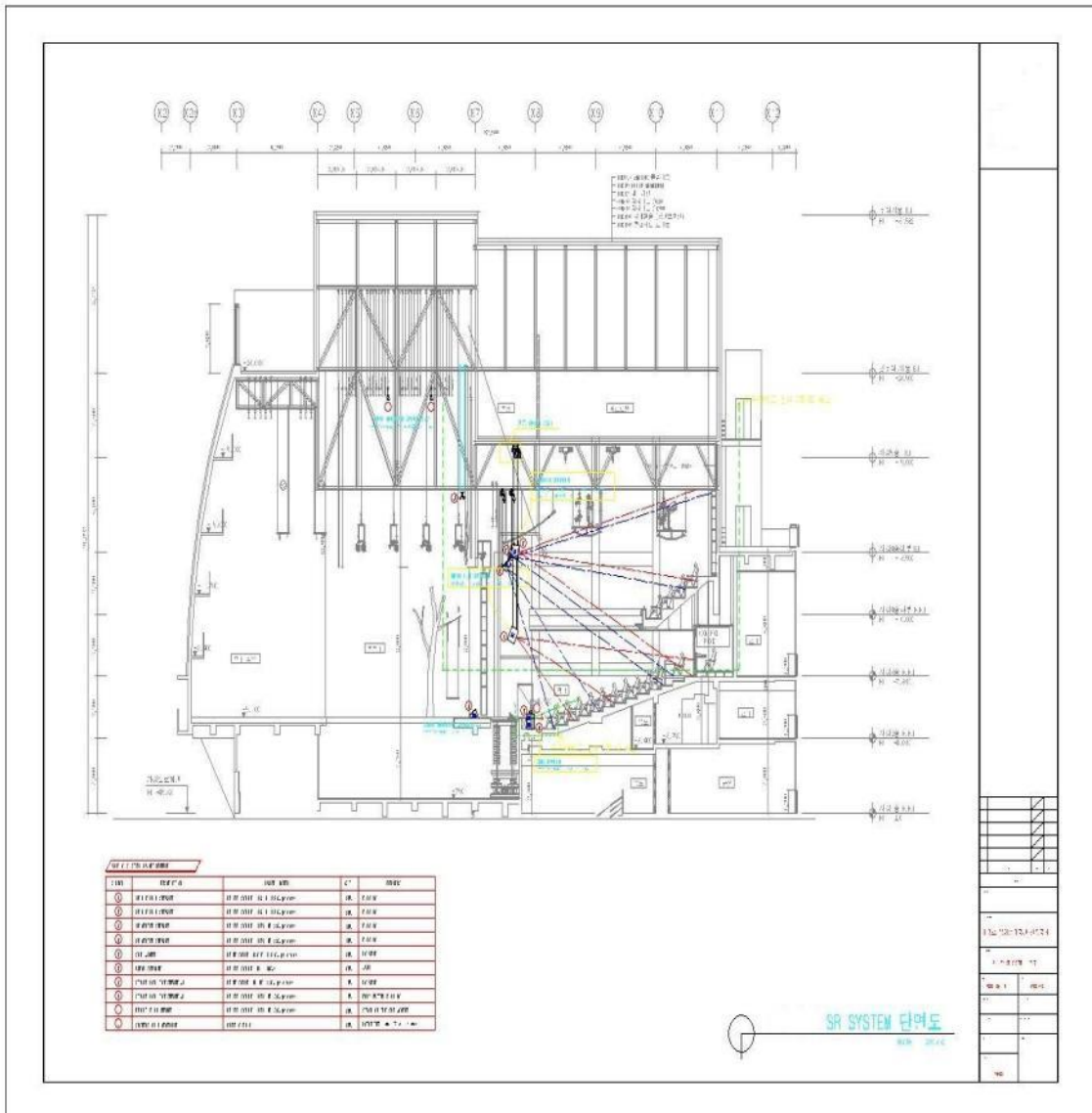
Item	Model	Specification	Quantity	Remark
AUDIO MIXING CONSOLE				
Console	YAMAHA PM5D-RH	48Mono+4Stereo In 24Mix+2Stereo+8Matrix Out	1EA	
EFFECTS / OUT BOARD EQUIPMENTS				
Speaker Management System	Meyer Sound GALIELEO 616	6In 16Out	1EA	
Multi Effect Processor	Lexicon 960L	Analog 8In 8Out AES/EBU 4In 4Out	1EA	
REPRODUCTION DEVICES / RECORDER / EDITOR				
CD Player	Denon DN-700C	Single CD Player	2EA	
CD Player	Denon DN-4500 MK2	Double CD Player	1EA	
SPEAKER SYSTEM				
Main Speaker System	Meyer Sound CQ-1	80°Horizontal × 40°Vertical 1240Watts	4EA	Main
	Meyer Sound UPA-1P	100°Horizontal × 40°Vertical 550Watts	2EA	Center
	Meyer Sound 650-P	360°Horizontal × 180°Vertical 1240Watts	2EA	Sub woofer
	Meyer Sound MM-4	80°Horizontal×80°Vertical 100W(AES)	6EA	Apron
	Meyer Sound MM-4 CEU	Speaker Controller for MM-4	1EA	
	Crest Audio Pro-7200	Power Amplifier for MM-4	1EA	Amplifier
Monitor Speaker System	Meyer Sound UPA-1P	100°Horizontal × 40°Vertical 550Watts	2EA	
	Meyer Sound UM-1P	45°Horizontal × 45°Vertical 550Watts	4EA	Wedge
	Meyer Sound UPM-1P	100°Horizontal × 100°Vertical 350Watts	4EA	
	RCF TT22-A	90°Horizontal × 40°Vertical LF/HF:500W/250W	2EA	Stage Monitor (Fixed)
	RCF NX12-SMA	80° × 80° constant directivity horn 12" High power neodymium woofer, 2.5" voice coil	2EA	with Stand
	RCF NX10-SMA	60° × 60° constant directivity horn 10" High power neodymium woofer, 2.5" voice coil	2EA	with Stand
INTERCOM SYSTEM				
Wired System	Telex		6EA	
Wireless System	HME	2.4GHz	8EA	
WIRELESS MICROPHONES				
W/L Receiver	Sennheiser-EM1046UHF-Rx-1	Receiver Module 8ch	1EA	Fixed
W/L Handheld Transmitter	Sennheiser-SKM5200		4EA	Fixed
W/L Bodypack Transmitter	Sennheiser-SK5212 II		4EA	Fixed

List of Microphone / Microphone Stand / DI Box (Common Using)



WIRED MICROPHONES				
Microphone	Shure-Beta91A	Condenser	1EA	
	Shure-Beta98H/C	Condenser	2EA	
	Shure-Beta57A	Dynamic	10EA	
	Shure-Beta58A	Dynamic	10EA	
	Shure-SM57	Dynamic	10EA	
	Shure-SM58	Dynamic	20EA	
	Shure-SM81	Condenser	3EA	
	AKG-C535EB	Condenser	5EA	
	AKG C451B	Condenser	2EA	
	AKG-C414(ULS)	Condenser	1EA	
	AKG-D112	Dynamic	2EA	
	Sennheiser-MD441	Dynamic	6EA	
	Sennheiser-MD421	Dynamic	4EA	
	Sennheiser-e902	Dynamic	1EA	
	Sennheiser-e904	Dynamic	4EA	
	Sennheiser-e604	Dynamic	5EA	
	Crown-PCC 160	Condenser	5EA	
	Earthworks-QTC1	Condenser	2EA	
	Rode-NT5 Stereo Pair	Condenser	1Pair	
	Rode-NT55	Condenser	2EA	
DPA-4099P Stereo Pair	Condenser	2Pair		
MICROPHONE STAND				
T-type	Proel	Long	10EA	Black
	Toto	Long	10EA	Black
	K&M	Long	5EA	Black
	Proel	Short	10EA	Black
	Toto	Short	10EA	Black
I-type	Proel	Long	5EA	Black
Gooseneck (Desk type)	Bando	Short	10EA	Black
DI Box				
DI Box	BSS AR-133	Mono	4EA	
	Radial Pro D2	Stereo	10EA	



4. Speakers Position & Direction



5. Control Booth

Console	PM5D-RH
	 A wide-angle photograph of a control booth. In the foreground, a large, complex digital mixing console is visible, featuring numerous faders, knobs, and buttons. Several computer monitors are positioned around the console, displaying various software interfaces. The background shows a dark stage area with some equipment and a few people standing in the distance.
	 A close-up photograph of the digital mixing console. The image highlights the intricate details of the control surface, including the faders, knobs, and buttons. A laptop is open on the console, and a monitor is visible in the background.
Remarks	Fixed